

Molly

cat. Extra

100% new wool worsted
Flame retardant - 75.000 Martindale



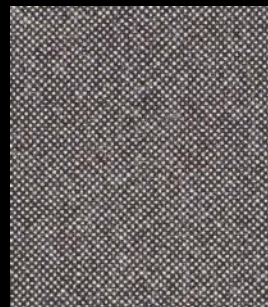
110



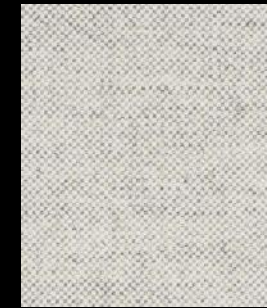
122



164



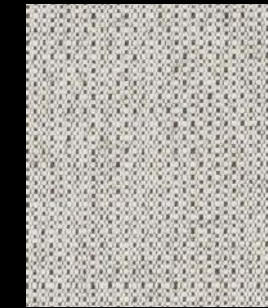
192



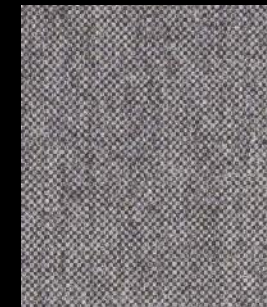
112



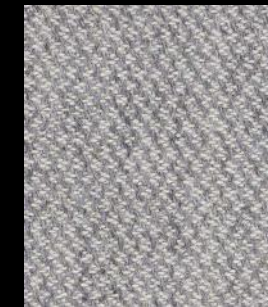
114



116



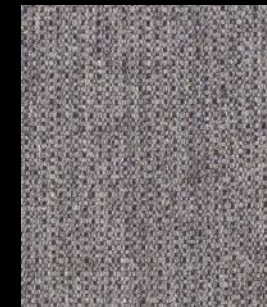
152



154



160††



166



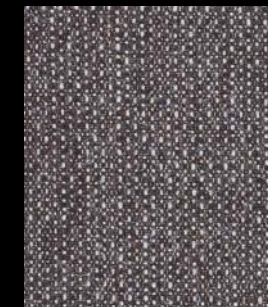
170



190



194



196

<div> <div>laCividina</div> <div>cat. Extra</div> </div>	<div> <div>Molly</div> <div>2018</div> </div>	<div> <div>Technical details</div> <div> <div>Composition</div> <div>100% new wool worsted</div> </div> <div> <div>Weight</div> <div>Gr./ml. 690</div> </div> <div> <div>Abrasion test</div> <div>Martindale - ISO 12947-2: 75.000 rubs</div> </div> <div> <div>Lightfastness</div> <div>ISO 105-B02: 4/7</div> </div> <div> <div>Pilling</div> <div>ISO 12945-2: 3/4</div> </div> <div> <div>Flame retardant</div> <div> <div>EN 1021-1/2</div> <div>DIN 4102 B2</div> <div>ÖNORM B1/Q1</div> <div>NF D 60 013</div> <div>UNI 9175 1IM</div> <div>US Cal. Bull. 117-2013</div> <div>NFPA 260</div> <div>IMO FTP Code 2010: Part 8</div> <div>BS 5852 part 1</div> </div> </div> <div> <div>Environment</div> <div>Complies with EU ecolabel "The Flower"</div> </div> </div>	
--	---	---	--